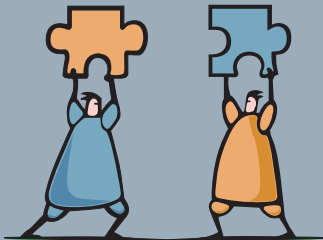


INTERNATIONAL CONGRESS OF DUAL PATHOLOGY

Addictive Behaviors and Other Mental Disorders



Asociación Española
de Patología Dual

May, 29th-31st 2008, Madrid (Spain)
Meliá Castilla Hotel

www.cipd2008.com

Final Program

SPONSORED BY

Scientific Societies



SET



SOCIDROGALCOHOL
Sociedad Científica Española
de Estudios sobre el Alcohol
y las otras Toxicomanías



IAEPD
Instituto Argentino
para el Estudio de
la Personalidad
y sus Desórdenes

Institutions



Agencia Antidroga
Comunidad de Madrid

madridsalud
INSTITUTO DE ADICCIONES

WELCOME TO MADRID	4
ABOUT THE ASOCIACIÓN ESPAÑOLA DE PATOLOGÍA DUAL	4
COMMITTEES	
■ Honorary Committee.....	5
■ Organizing Committee.....	5
■ National Scientific Committee.....	5
■ International Scientific Committee.....	5
TOPICS	6
PROGRAM OVERVIEW	
■ Wednesday, 28 th May.....	6
■ Thursday, 29 th May.....	7
■ Friday, 30 th May.....	7
■ Saturday, 31 st May.....	7
SCIENTIFIC PROGRAM	
■ Plenary Sessions.....	8
■ Conferences.....	8
■ Symposia.....	9
■ Looking in a different way from the world of culture.....	12
■ Workshops.....	12
■ Meeting with the Expert.....	13
■ Presentations.....	13
■ Oral Communications.....	14
■ Posters.....	16
■ Speakers Index.....	21
GENERAL INFORMATION	
■ Types of Sessions.....	22
■ Awards.....	22
■ Credits.....	22
■ Prizes.....	22
■ Social Events.....	23
■ Venue.....	23
■ Venue Map: Directory.....	24
SPONSORING PHARMACEUTICAL COMPANIES	25
TECHNICAL SECRETARIAT	26
SUPPORTING SOCIETIES AND INSTITUTIONS	28

We are pleased to cordially invite you to the **International Congress of Dual Pathology: Addictive Behaviours and Other Mental Disorders**, to be held in Madrid, 29-31 May 2008.

The high rate of co-occurrence of substance use disorders and other psychiatric disorders (**dual pathology**) is well established. As you may be aware, the rapid progress of technical advances in the neurosciences has led to a better understanding of the molecular biology involved in this area and new medication and treatment approaches are appearing with good prospects in Dual Pathology. In addition psychological, cultural and societal influences in this field provide a general background, so it is necessary for experts to meet and discuss on these developments.


This meeting will provide the opportunity for clinicians and researchers, as well as, distinguished guests to exchange views and ideas, discuss recent knowledge and possible actions in order to improve the health and well being of the dual pathology patients all over the world.

Topics for the congress have been carefully chosen by the scientific committee, including of course the most controversial issues of the speciality. Internationally renowned speakers will be invited to present these topics, in order to create an effective forum for discussing and debating, allowing participants to interactively participate in the discussions. An interesting, high quality and exciting scientific programme together with dynamic and varied social activities, is being prepared.

The Congress venue offers top facilities and Madrid, one of Europe's most beautiful cities is waiting for you full of history, culture, tradition, delicious cuisine and a friendly atmosphere.

We cordially invite you all to participate in this exciting scientific and cultural event in Madrid.

We are looking forward to seeing you!



Néstor Szerman
President
International Congress of Dual Pathology



Néstor Szerman
President, AEPD

The progress in neurosciences and epidemiological studies have provided evidence for the close and significant relationship between mental disorders and addictive behaviours; that is, **dual pathology**. However, despite decades of highly documented research on this comorbidity, there is still controversy on this entity that often remains to be denied or even over-looked by some clinical groups which manage these pathologies, with the side effect of having individuals un-diagnosed or with inadequate treatments, which influences in the morbidity and mortality and at the end in a greater suffering for the patients and their families.

This new clinical reality needs not only to be aware of the mechanisms lying below this comorbidity, but it has also created the need of developing a common floor for professionals implied in this field, giving them support in their concerns and in their research, clinical, or teaching projects.

It is therefore that in 2005 **AEPD** was formed, as an association bringing together and offering a common space for clinicians, researchers, doctors and psychologists, working in the different Addiction, Psychiatry and Mental Health Units, or at other settings where patients with dual pathology could be at treatment. We look forward and boast for an Association, which has at this moment, over 400 professionals, mainly Spanish, but also Latinamerican of diverse trainings, overcoming old barriers, hierarchies and suspicions being at the same time independent from official health administrations, from industry commercial interests as well as from the legitimate professional vindications already organised by other institutions.



The **Spanish Association of Dual Pathology** has been able to constitute itself into a prestigious reference within the national and international dual pathology field, to assess, research ... in the end to provide a service to our society.

HONORARY COMMITTEE

Chairman of Honour

H.R.H. La Infanta Doña Elena

Excmo. Sr. D. Bernat Soria Escoms. *Minister of Health*

Excma. Sra. Doña Esperanza Aguirre Gil de Biedma. *President of Madrid Autonomous Community*

Excmo. Sr. D. Alberto Ruiz-Gallardón. *Mayor of Madrid*

Excmo. Sr. D. Juan Güemes Barrios. *Health Councillor of Madrid Autonomous Community*

Excma. Sra. Doña. Carmen Moya García. *National Delegate of Drug Addiction Plan*

Ilmo. Sr. D. Pedro Calvo Poch. *Security Services Councillor of Madrid City Council*

Sr. D. Jose Manuel Torrecilla. *General Director of Health Department of Madrid City Council*

ORGANIZING COMMITTEE

Néstor Szerman Bolotnér

Ignacio Basurte Villamor

Carlos Álvarez Vara

Pablo Vega Astudillo

Beatriz Mesías Pérez

Carlos Roncero Alonso

José Martínez Raga

Francisco Arias Horcajadas

Enriqueta Ochoa Mangado

Rosa Fdez. Marcote Sánchez Mayoral

Gerardo Gastón Pacheco Otoya

Félix Poyo Calvo

Álvaro Rivera Villaverde

José Javier Rosa Mestre

Carmen Tosio González

Vicente García Vicent

Daniel Giner Jiménez

Nicolás López Melero

Gregorio Martín Carmona

Luís Alfonso Núñez Domínguez

Javier Ogando Rodríguez

César Paumard Oliván

Juan del Pozo Irribarría

Domingo José Robayna Ojeda

María del Mar Sánchez Fdez.

Antonio Terán Prieto

José Miguel Zoido Ramos

Carmen Puerta García

Pedro Cuadrado Calleja

Juan Jesús Hernández

SCIENTIFIC COMMITTEE

CO-PRESIDENCY

Miguel Casas Brugué

Juan José López-Ibor Aliño

Julio Bobes García

NATIONAL

Luis Agüera Ortiz

Javier Álvarez González

Carlos Álvarez Vara

José Luís Ayuso Gutiérrez

Francisco de Asís Babín Vich

Enrique Baca Baldomero

Enrique Baca García

Fernando Bandrés Moya

Ignacio Basurte Villamor

Miquel Bernardo Arroyo

Luis Caballero Martínez

Alfredo Calcedo Barba

Alfredo Calcedo Ordóñez

José Luís Carrasco Perera

Lorenzo Castellote Zaurín

Gaspar Cervera Martínez

Joan Colom i Farran

Lola Crespo

Santiago Delgado Bueno

Lourdes Fañanas Saura

Dolores Franco Fernández

José L. González de Rivera y Revuelta

Miguel Gutiérrez Fraile

Miguel Ángel Jiménez Arriero

Miguel Ángel Landabaso Vázquez

Carmen Leal Cercos

María Inés López-Ibor Alcocer

Manuel Cristóbal Molina Muñoz

Tomás Ortiz Alonso

Tomás Palomo Álvarez

César Pascual Fernández

José Pérez de los Cobos

José Antonio Ramos Quiroga

Miquel Roca Bannasar

Gabriel Rubio Valladolid

Luís San Molina

Javier San Sebastián Cabasés

Jerónimo Saiz Ruiz

Joaquín Santodomingo Carrasco

Josep Solé Puig

Néstor Szerman Bolotnér

Marta Torrens Melich

Eduard Vieta Pascual

Julio Zarco Rodríguez

INTERNATIONAL

Luís Alfonso B. (OAS)

Edgard Belfort (Venezuela)

José Bertolote (Swiss)

Octavio Campollo (Mexico)

Javier Didia (Argentina)

Eduardo Kalina (Argentina)

Néstor Koldobsky (Argentina)

Arturo Lerner (Israel)

Fernando Lolas (Chile)

Mario Maj (Italy)

Hugo Adolfo Míguez (Argentina)

Roger Montenegro (Argentina)

Iván D. Montoya (EE.UU)

Driss Moussaoui (Morocco)

Rafael Navarro Cueva (Peru)

Juan Carlos Negrete (Canada)

Pedro Ruiz (EE.UU)

Benedetto Saraceno (Swiss)

Norman Sartorius (Swiss)

Daniel Seijas (Chile)

Juan Triaca (Uruguay)

Angel Valmaggia (Uruguay)

Elvia Velásquez (Colombia)

Nora D. Volkow (EE.UU)

Carlos Zubaran (New Zealand)



1. New Technologies Abuse
2. Tobacco Dependence
3. Adolescent Pathology
4. Anxiety
5. Comorbidity
6. Compulsivity
7. Bipolar Depression
8. Dual Diagnosis
9. Epidemiology
10. Schizophrenia
11. Future and Research
12. Genetics of Substance Abuse Disorders
13. Pathological Gambling
14. Impulsivity
15. Transcultural Aspects in Dual Pathology
16. Gender Differences in Dual Pathology
17. Neurobiology
18. Brain imaging
19. Dual Pathology
20. Drugs and Psychosis
21. Addictive Disorders
22. Eating Disorders
23. Bipolar Disorders
24. Impulse Control Disorder
25. Attention Deficit-Hyperactivity Disorder
26. Post-traumatic Stress Disorder
27. Borderline Personality Disorder
28. Co-Occurring Disorders
29. Personality Disorders
30. Psychopharmacological Treatments
31. Psychosocial Treatments

PROGRAM OVERVIEW



Wednesday, May 28th

		HIDALGO	
19:00		General Assembly of the Asociación Española de Patología Dual	Late Registration and Collection of Congress Documentation
20:00			

Thursday, May 29th

	AUDITORIO 	HIDALGO 	MANCHA	ESCUDO	CASTILLA	CALATRAVA
08:00	Collection of Congress Documentation					
09:30	S07 9:30-11:00	S21 9:30-11:00	S22 9:30-11:00	S13 9:30-11:00	EXHIBITION	POSTERS
10:00						
10:30	COFFEE BREAK 11:00-11:30					
11:00	CF07 11:30-12:30	S12 GSK 11:30-13:00	S06 BMS 11:30-13:00	S11 11:30-13:00		
12:00						
12:30	Opening Ceremony 12:30-13:30	S24 13:00-14:30	S20 13:00-14:30	P04 13:30-14:30		
13:00	P01 13:30-14:30					
13:30	W05 14:30-16:00	W04 14:30-16:00	S23 14:30-16:00	P06 14:30-15:30		
14:00						
14:30	E05 16:00-17:00	S10 16:00-17:30	S26 16:00-17:30	CF06 15:30-16:30		
15:00						
15:30	SP03 17:00-18:00	S14 Madrid Salud 17:30-19:00	E01 17:30-19:00	P03 16:30-17:30 Agencia Antidroga		
16:00						
16:30	CF01 18:00-19:00	S27 17:30-19:00	S09 19:00-20:30			
17:00						
17:30	S08 19:00-20:30	S25 19:00-20:30	W08 19:00-20:30			
18:00						
18:30						
19:00						
19:30						
20:00						

Friday, May 30th

	AUDITORIO 	HIDALGO 	MANCHA	ESCUDO	CASTILLA	CALATRAVA		
08:00	ORAL COMMUNICATIONS 08:00-9:30				EXHIBITION	POSTERS		
08:30								
09:00								
09:30	S33	S16	E02 Pfizer	S04				
10:00	9:30-11:00	9:30-11:00	9:30-11:00	9:30-11:00				
10:30								
11:00	COFFEE BREAK 11:00-11:30							
11:30	SP1	W02	W11	W01				
12:00	11:30-12:30	11:30-13:00	11:30-13:00	11:30-13:00				
12:30	Awards 12:30-13:00							
13:00	S31	S29 Lilly	W13 Juste	S19				
13:30	13:00-14:30	13:00-14:30	13:00-14:30	13:00-14:30				
14:00								
14:30	CF04	W06	W12 Lilly	P05				
15:00	14:30-15:30	14:30-16:00	14:30-16:00	14:30-15:30				
15:30	CF05			P02				
16:00	15:30-16:30			15:30-16:30				
16:30	CF03	S30 Schering Plough	E03 Brainpharma	S01				
17:00	16:30-17:30	16:00-17:30	16:00-17:30	16:30-18:00				
17:30	UNA MIRADA DIFERENTE	S02	W03	W07				
18:00	17:30-19:00	17:30-19:00	17:30-19:00	18:00-19:30				
18:30								
20:00	COCKTAIL "JARDINES DE CECILIO RODRÍGUEZ" (EL BUEN RETIRO)							

Saturday, May 31st

	AUDITORIO	HIDALGO	MANCHA	ESCUDO	CASTILLA	CALATRAVA
09:00		E04	S03	W09	EXHIBITION	POSTERS
09:30	CF02	09:00-10:30	09:00-10:30	09:00-10:30		
10:00	9:30-10:30					
10:30	COFFEE BREAK 10:30-11:00					
11:00	SP02	S15	S17	S32		
11:30	11:00-12:00	11:00-12:30	11:00-12:30	11:00-12:30		
12:00	S05					
12:30	12:00-13:30	S18	S28 SET	W10		
13:00		12:30-14:00	12:30-14:00	12:30-14:00		
13:30						
14:00	Closing Ceremony 14:00-14:30					

S= Symposium	W= Workshop	SP= Plenary Session
CF= Conference	P= Presentation	E= Master Clinical Case

PLENARY SESSIONS

- SP01 How Does Co-Morbidity with Drug Abuse Inform us on the Neurobiology of Mental Illnesses?**
 Introduced by ▶ **N. Szerman** (Spain)
President of the Spanish Association of Dual Pathology
- Chairman ▶ **J.M. Torrecilla** (Spain)
General Director of Health Department of Madrid City Council
- Speaker ▶ **N. Volkow** (USA)
National Institutes of Health (NIH) and Director of National Institute on Drug Abuse (NIDA)
- SP02 New Perspectives in Addiction Psychiatry**
 Chairman ▶ **P. Ruiz** (USA)
Past President of the American Psychiatry Association
- Speakers ▶ **P. Ruiz** (USA), **M.I. López-Ibor** (Spain) and **J. Bobes-García** (Spain)
- SP03 New Drugs: Opportunities and Challenges**
 Chairman ▶ **J.M. Fernández-Rúa** (Spain)
Scientific journalist at the ABC Newspaper
- Speakers ▶ **J. Ellena** (Spain)
President and CEO of Lilly for Spain
- M. Sellés** (Spain)
President and CEO of Janssen-Cilag, S.A. for Spain and Portugal

CONFERENCES

- CF01 Agonists, Self-medication and Dual Pathology**
 Chairman ▶ **J. Colom** (Spain)
Deputy Director of Drogodependències
- M. Casas** (Spain)
Professor in Psychiatry at the University of Barcelona
- CF02 Addiction in the USA: A Hispanic Perspective**
 Chairman ▶ **E. Belfort** (Venezuela)
Professor in Psychiatry at Caracas University
- P. Ruiz** (USA)
Ex-President of the American Psychological Association (APA). Member of the Executive Committee of the World Psychiatric Association (WPA)
- CF03 Psychopathology Associated with Phencyclidine and Ketamine and its Implications for Schizophrenia**
 Chairwoman ▶ **M.I. López-Ibor** (Spain)
Professor in Psychiatry at Madrid University
- P. Mckenna** (United Kingdom)
Professor in Psychiatry at Glasgow University
- CF04 Borderline Personality Disorder and Addictions**
 Chairman ▶ **J. Melendo** (Spain)
Regional Office of Salud Mental
- N. Koldobsky** (Argentina)
President of the Argentine Institute for the Study of the Personality and its Disorders (IAEPD). Professor in Psychiatric at the University of La Plata
- CF05 Pharmacological Treatment of Addictions in Patients with Dual Pathology**
 Chairman ▶ **J.L. González de Rivera y Revuelta** (Spain)
Professor of Psychiatry
- J.C. Negrete** (Canada)
Professor in Psychiatric at the Mc Gill University of Montreal
- CF06 Pharmacological treatment of dual patients addicted to cocaine**
 Chairman ▶ **J.M. Montes** (Spain)
Psychiatric Director at Sureste Madrid Hospital
- E. Kalina** (Argentina)
Medical Director of Braincenter
- CF07 Drugs abuse in Spain: The Real Figures**
 Chairman ▶ **C. Álvarez-Vara** (Spain)
Honoray President of Asociación Española de Patología Dual
- C. Moya** (Spain)
National Delegate of Drug Addiction Plan

SYMPOSIA

S01 Dual Pathology and TobaccoChairman ▶ **V. García-Vicent** (Spain)

Why do individuals with psychiatric symptomatology smoke more tobacco?

F.J. Ayesta-Ayesta (España)Tobacco abuse in psychotic patients
C. Pinet (España)Bipolar disorder and tobacco abuse
M. Gurpegui (Spain)**S02 Trends in the Neuroscience of Dual Pathology**Chairman ▶ **E. Baca-García** (Spain)Alcoholism and bipolar disorder; Functional results from brain images
L. Sher (USA)Bipolar disorder and alcoholism in adolescents: An evolutive perspective
J.J. Carballo (Spain)From dual pathology to endophenotypes. A specific example of suicidal behaviour
P. Courtet (France)Tobacco use and schizophrenia
J. De León (USA)**S03 Neurobiological and Epidemiological Evidence of a Casual Relationship Between Cannabis and Psychosis**Chairman ▶ **L.A. Núñez-Domínguez** (Spain)Neurobiological and Epidemiological evidence of a casual relationship between cannabis and psychosis
L. A. Núñez-Domínguez (Spain)Endocannabinoid and psychosis system: Two faces on the same coin
E. Fernández-Espejo (Spain)Animal models for the evaluation of psychotic-like symptoms and other comorbid neuropsychiatric alterations associated with neurodevelopmental insults: Interactions with the endocannabinoid system
M.P. Viveros (Spain)**F. Rodríguez-Fonseca** (Spain)**S04 Neurobiological Mechanisms Implicated with the Interrelationship Between the Abuse of Cannabis and Other Drugs**Chairmen ▶ **J.A. Ramos-Atance** (Spain)**F. Arias-Horcajadas** (Spain)Neurobiology of alcoholism: Implication of the cannabis system
J. Fernández-Ruiz (Spain)Neurobiological mechanisms of the interrelationship between cocaine and cannabis abuse
E. Ambrosio (Spain)Neurobiology of ecstasy intake. Role of the endogenous cannabinoid system
I. Colado (Spain)**S05 Psychopathology Associated to Cannabis Abuse**Chairman ▶ **F. Arias-Horcajadas** (Spain)Mood disorders and anxiety related to cannabis intake
E. Ochoa-Mangado (Spain)Psychosis and cannabis intake
L.A. Núñez-Domínguez (Spain)

Presenting clinical cases associated with cannabis intake

A. Madoz-Gúrpide (Spain)

Presenting clinical cases associated with cannabis intake

M. García-Nieto (Spain)**S06 A New Path in Schizophrenia and Dual Pathology**

(Organized by Bristol-Myers Otsuka)

Chairman ▶ **J. Bobes** (Spain)Triplement of alcoholism in serious mental illness
J. Bobes (Spain)Impact of physical health in dual pathology
M. Bernardo (Spain)Management of serious mental illnesses: Schizophrenia
J. Sanjuan (Spain)**S07 Personality Disorders and Addictions**Chairwoman ▶ **L. Peris** (Spain)Discussor ▶ **J. Didia-Attas** (Argentina)Impulsivity, addiction and personality disorders. Are we referring to Cluster B?
L. Peris (Spain)

Comorbidity between personality disorders and addiction. Beyond Cluster B

M.A. González-Torres (Spain)Borderline personality disorder and opiate use
N. Szerman (Spain)**S08 Models of Treatment in Dual Pathology: From a Clinical Experience**Chairman ▶ **J. Martínez-Raga** (Spain)Dual pathology: From theory to clinical practice
L. San Molina (Spain)

Model of treatment in U.K for patients with dual pathology

A.M. Almaraz-Serrano (United Kingdom)

Approach into dual pathology networks

J. Didia-Attas (Argentina)

Psychiatric pathology and drug abuse: How to identify and treat it. An experience of the Bizia Bayona Drug abuse center

J.P. Daulouede (France)**S09 Epigenetics and Impulsivity in Dual Pathology**Chairman ▶ **M.A. Jiménez-Arriero** (Spain)Genotypes and phenotypes associated to interactive and addictive impulsivity
J. Hoenicka (Spain)

Clinical implications of impulsivity trends in addictive behaviors

G. Ponce-Alfaro (Spain)

Pharmacological management of comorbidity in impulsive dual pathology

I. Martínez-Gras (Spain)The impulsivity as a resource in dual pathology coping
M. Iribarren (Spain)

- S10 Alcoholism and Dual Pathology in Clinical Practice and Research**
Chairman ▶ **J. Solé** (Spain)
Neurobiological aspects of substance intake and the psychosis
P. McKenna (United Kingdom)
Dual pathology in Spain: Implemented answers
J. Valls (Spain)
Dual pathology and alcoholism: Therapeutic answers
J. Solé (Spain)
- S11 Duality in Bipolar Disorders: A Reality Mandatory to be Understood**
Chairman ▶ **J.M. Montes** (Spain)
Clinical importance of a dual diagnosis in bipolar disorders
J.M. Goikolea (Spain)
Psychopharmacological treatment of bipolar disorders with comorbidity with toxic abuse
A. Benabarre (Spain)
Psychosocial approaches in dual diagnosis in bipolar patients
M. Mas-Baga (Spain)
Role of dopamine in the compensating system and attribution to reality: Understanding dual pathology
G. Lahera (Spain)
- S12 Dopamine: Dual pathology and depression**
(Organized by GlaxoSmithKline)
Chairman ▶ **M. Casas** (España)
Neurobiology in dopamine-energetic circuits in affective disorders with substance abuse and dependency
M. Farré (Spain)
Clinical aspects of dual pathology in depression: Therapeutic implications
C. Roncero (Spain)
Therapeutic implications
M.D. Franco (Spain)
- S13 Dual Pathology as a Risk Factor**
Chairman ▶ **G. Rubio-Valladolid** (Spain)
Patients with dual diagnosis: A new challenge in psychiatric emergencies
M. Aragües (Spain)
Damaged cognition: Cause or consequence in patients with schizophrenia and substance abuse diagnosis?
R. Rodríguez-Jiménez (Spain)
Impulsivity as a common element in disorders due to substance abuse or other psychiatric disorders
M. Navío (Spain)
Addictive habits and psychiatric comorbidity in advanced age
L. Agüera (Spain)
- S14 The Homeless and Dual Pathology**
Chairman ▶ **F. Babín-Vich** (Spain)
(Organized by Madrid Salud)
Tackling rough sleeping in England
S. Guyon (United Kingdom) and **J. Espinera** (United Kingdom)
Tackling of homeless which present dual pathology, from the municipal network, in the city of Madrid
D. Pérez-Madera (Spain)
- Tackling dual pathology on homeless people in the city of Madrid. Experiences from the drug-dependants care centres of the municipal network
A. Cáceres (Spain)
- S15 Legal Psychiatry and Dual Pathology**
Chairman ▶ **A. Calcedo-Ordóñez** (Spain)
Dual pathology within prisons
V. Tort (Spain)
Community medical- legal problems in the attention to drugdependents
J. Sanz (Spain)
The addict patient responsibility facing his/her own addictive conduct
A. Calcedo-Barba (Spain)
- S16 Stress, Intake and Reward System**
Chairman ▶ **A. Charro** (España)
Energetical haemoestasis and intake regulating mechanisms
J.A. Cabranes (Spain) and **I. Ancín** (Spain)
Gene implication in stress bypasses and compensation in obesity
A. Barabash (Spain) and **B. Vázquez** (Spain)
Morbid obesity. Personality versus confronting strategies
D. Jiménez, M. Sanz, M. Velao and **B. Torres-Pardo** (Spain)
Repercussions of bariatric surgery in food disorders, impulsivity and psychiatric pathologies associated to morbid obesity
M. Saénz-Herrero and **J. García-Albea** (Spain)
- S17 Sick Doctors and Dual Pathology**
Chairman ▶ **C. Roncero** (Spain)
Dual Pathology in hospitalized sick doctors
P. Lusilla (Spain)
Burnt out and drug dependencies in medical doctors
B. de la Fuente (Spain)
External health clinics for sick doctors
M.M. Sánchez (Spain)
- S18 Evaluation and Assessment in Dual Pathology**
Chairwoman ▶ **M.D. Franco** (Spain)
Assessment of the nuclear symptoms of dependence: Psychophysiological correlations of craving
M. Jiménez (Spain)
Devising an evaluation guide in dual pathology
P. Sáiz (Spain)
Specific instruments in dual pathology: Regarding the PRISM (Psychiatric Research Interview for Substance and Mental Disorders)
L. Díaz (Spain)
Challenges in the assessment of dual pathology
P. García-Portilla (Spain)
- S19 Addiction to New Technologies**
Chairman ▶ **F. Ferré-Navarrete** (Spain)
Study of the problematic use of new technologies in adolescents and young people in the city of Madrid
F. Babín-Vich (Spain)
Psychopathology of addiction in adolescents and behavioral consequences in adulthood
J. San Sebastián-Cabasés (Spain)
Methodological difficulties in the investigation of new addictions
D. Fraguas-Herráez (Spain)

- S20 Epidemiology, Dual Pathology and Disorders Due to Drug Intake**
Chairman ▶ **J. Álvarez** (Spain)
Dual Pathology in patients: Depending on substances and scenarios
M. Torrens (Spain) and **A. Domingo** (Spain)
Dual pathology and adherence to treatment of patients with cannabis adictions
B. Gonzalvo (Spain) y **C. Roncero** (Spain)
Epidemiology in alcoholic dual pathologic patients
A. Lligoña (Spain)
- S21 Addictions and Depressive Disorders**
Chairman ▶ **M. Torrens** (Spain)
Contributions of the animal models to the study of the dual situation of depression-addiction
O. Valverde (Spain)
Epidemiological aspects of depression in addictions
R. Martín-Santos (Spain)
Pharmacological treatment of depression in addicted patients
M. Torrens (Spain)
Depression and substance use disorders in primary care: The Diamond Study
G. Gilchrist (Australia)
- S22 Drug dependencies and Dual Pathology from an Evolution Perspective**
Chairman ▶ **C. Álvarez-Vara** (Spain)
Dual pathology from an evolution perspective
L. Caballero (Spain)
Interaction genetics environment
J. Sanjuan (Spain)
- S23 Eating Disorders (ET) and Dual Pathology**
Chairwoman ▶ **M. Díaz-Marsá** (Spain)
Update of dual pathology disorder in ET
L. Rojo (Spain)
Therapeutic trends in ET with addictions
F. Vaz (Spain)
Gender differences in the development of ET or toxic intake
L. Beato (Spain)
- S24 Transcultural Factors in Dual Pathology**
Chairman ▶ **L. Caballero** (Spain)
Cultural formulae in dual pathology
L. Caballero (Spain)
Clinical management of immigrant dual pathology patients
C. López (Spain)
Profile of immigrant users within the Catalanian drugdependent network
F. Collazos (Spain)
- S25 ADHD Along the Life-span and Disorders due to the Use of Substances: Update**
(Organized by Janssen-Cilag)
Chairman ▶ **M. Casas** (Spain)
Disorders due to substance intake in a sample of spanish adults with ADHD
J.A. Ramos-Quiroga (Spain)
ADHD in patients with disorders due to substance intake
C. Roncero (Spain)
- ADHD and bipolar disorders in childhood
C. Soutullo (Spain)
ADHD in adolescence and disorders through substance intake
F.J. Quintero (Spain) and
J.A. Ramos-Quiroga (Spain)
- S26 Dual Pathology in Geriatric Psychiatry**
Chairman ▶ **A. Moriñigo** (Spain)
General context of dual pathology in geriatric psychiatry versus general psychiatry
S. Ros (Spain)
Abuse of benzodiazepine in the elderly
I. de la Serna (Spain)
Alcoholism associated with other pathologies in geriatric psichiary
D. Franco (Spain)
- S27 Dual Pathology in Latinamerica: Asociación Latinoamericana de Adicciones (ALAD)**
Chairwoman ▶ **E. Velásquez** (Colombia)
Bipolar disorders and addictions
E. Velásquez (Colombia)
Dual pathology in the Ñaña Therapeutic Community
R. Navarro-Cueva (Peru)
Pathological gambling and dual pathology
C. Sánchez-Bello (Venezuela)
Dual pathology and alcoholism in Ecuador
S. Pacurucu (Ecuador)
Depression and tobacco
I. Didia-Attas (Argentina)
Comorbidity and treatment in tobacco addiction
D. Seijas (Chile)
Difficulties for comorbidity diagnosis in a modified therapeutic community
R. Chandía (Chile)
- S28 Addictions and impulse control: Unity or Duality**
(Organized by la Sociedad Española de Toxicomanías - SET)
Chairmen ▶ **C. Puerta** (Spain) and
E. Ambrosio (Spain)
Addiction and impulsivity: Introduction
E.J. Pedrero-Pérez (Spain)
Addiction and impulsivity from the perspective of the functioning of the frontal lobe
A. Verdejo-García (Spain)
Addiction and impulsivity from the perspective of personality disorders
A. López-Durán (Spain)
Cocaine addiction and attention-deficit hiperactivity disorder (ADHD) in a Spanish sample
J. Pérez de los Cobos y Grupo TDAH (Spain)
- S29 Depression and Pain in Addictions**
(Organized by Lilly Pharmaceuticals)
Chairman ▶ **M. Roca** (Spain)
Depression, anxiety and pain in addictions. Neurobiological aspects
J.A. Micó (Spain)
Depression, anxiety and pain in addictions. Clinical aspects
L. Caballero (Spain)

- S30 Suboxone®: Progressing in the Treatment of Opiate Dependence**
(Organized by Schering-Plough Pharmaceuticals)
Chairman ▶ **M. Casas** (Spain)
Pharmacological aspects of buprenorfina/naloxona programme treatments
F. González-Sáiz (Spain)
Opium dependency treatments with Suboxone®
C. Roncero (Spain)
The european experience: France
J.P. Daulouede (Francia)
- S31 Dual Patient in Search of all Inclusive Intregal Treatment**
Chairman ▶ **M. Casas** (Spain)
Neurobiological bases of substance abuse. Why are they consumed?
C. Alamo (Spain)
Dual pathology and cocaine treatment . New evidences
G. Haro (Spain)
- S32 Clinical Pharmacological Modalities for the Treatment of Dual Bipolars**
Chairman ▶ **E. Kalina** (Argentina)
Integral approach to false bipolars due to drugs
J. Aizpiri-Díaz (Spain)
Institutional control of the bipolar addict
P.M. Roig (Brazil)
Alcoholic bipolars
C. Kalina (Argentina)
R. Chandia-Ramos (Chile)
- S33 Partial Agonists in Dual Pathology**
Chairman ▶ **J.A. Micó** (Spain)
Concept of parcial agonists
J.A. Micó (Spain)
Vareniclina
E. Bruguera (Spain)
Aripiprazol
J. San Juan (Spain)
Buprenorfina
J. Ramírez (Spain)

LOOKING IN A DIFFERENT WAY FROM THE WORLD OF CULTURE

- How to Survive Fame, Alcohol and Drugs when you are a Famous Journalist and Writer**
Chairman ▶ **N. Szerman** (Spain)
C. Rigalt (Spain). *Journalist and Writer*
R. Del Pozo (Spain). *Journalist and Writer*

WORKSHOPS

- W01 Dual Pathology in Peru. A Model of Experience**
Chairman ▶ **C. Cachay-Chávez** (Peru)
First city council center for prevention, treatment and rehabilitation of children and adolescents against violence and drug addiction
Y.Z. Meres-Montero y V.M. Salcedo-Ríos (Peru)
Burden of disease of alcohol abuse in Peru
C. Cachay-Chávez (Perú)
- W02 Psychosocial Treatments in Dual Pathology**
Chairman ▶ **M. Rodríguez-Pérez** (Spain)
Psychosocial control
M.M. Isidro (Spain) *Proyecto Hombre*
Alsino, a Solidarity Villa. Towards forming individuals
C.M. Silva-Valdebenito (Chile)
Dual pathology and family
P. Rossi (Argentina). *Fundación Manantiales*
- W03 Resources and Assisting Devices in Dual Pathology**
Chairman ▶ **P. Vega** (Spain)
Support homes for women with dual pathology helping them to become stable. Education and sharing
M.I. Guijarro-Torres (Spain) *Asociación Mundo Justo*
Prospection of resources and design of strategic mechanisms
M. Padrino (Spain) *Asociación Dual*
Dual pathology in addict patients; comparison between prisoners in a drug free unit versus other staying in a non penitentiary unit
M.J. Casares-López (Spain)
- W04 Approach to the Dual Patient in a Drug Addict Clinical Care Center. How to Survive Without a Psychiatrists**
Chairman ▶ **J.J. Hernández** (Spain)
History of a life without psychiatrists; from indifference to coordination
G. Martín (Spain)
Psychopharmacological treatment: ¿which one and to whom?
R. Molina (Spain)
Conflictive situations in psychopharmacological treatments
C. del Pino (Spain)
Psychological tools for the management of the dual patient: The importance of team work
M. del Nogal (Spain)
- W05 Specific Psychoeducation in Dual Pathology**
Chairman ▶ **J. Solé** (Spain)
Role of psychoeducation in a treatment
J. Solé (Spain)
The psychoeducational team, day by day
M.J. Sotelo (Spain)
Sanitary practice of psychoeducation
I. Ríos (Spain)
- W06 Vulnerability Factors in Dual Pathology**
Chairman ▶ **A. Rivera-Villaverde** (Spain)
Effects of cannabis intake during adolescence, in the development of dual pathology
D. Urgelés-Puértolas (Spain)
Predictors of diagnosis change after treatment
J. del Corral-Serrano (Spain)
Family structure in Dual Pathology
L. Muñoz-Lorenzo and R. Rebolledo-Carmona (Spain)

W07 Impulsivity and Dual PathologyChairman ▶ **I. Basurte-Villamor** (Spain)

Addiction and suicide

G. Santillán (Argentina)

Adolescents in dual pathology. Contradictions and balance

D. Gigena Parker (Argentina)

Depressive disorder and alcoholism: Clinical and psychotherapeutic consequences

J.L. Fernández (Argentina)**W08 Approach and Control of Dual Pathology in Primary Care. SEMERGEN**Chairman ▶ **R. Casquero-Ruiz** (Spain)

Characteristics of primary care: Strengths and weakness

R. Casquero-Ruiz (Spain)

The diagnosis of dual pathology in primary care

R. Casquero-Ruiz (Spain)

Follow up of dual pathology in primary care

S. López-Chamón (Spain)**W09 Self-help Groups and Dual Pathology**

Asociación de Alcohólicos Anónimos (AAA)

A. González-Catena (España)

Asociación Leganense de Jugadores en Rehabilitación (ALEJER)

C. Rodríguez-Seguí (Spain)

Federación de Alcohólicos de la Comunidad de Madrid (FACOMA)

W10 Dual Pathology in Adolescents and YouthsChairman ▶ **E. Saad** (Ecuador)

Profile of the young adult consumer coming to a DAHD and drug dependent center

M. Ajoy (Spain)

Retrospective study of cases of dual pathology in young patients from the San Juan de Dios Care Center in Quito

E. Aguilar (Ecuador)

Affective disorders and drug abuse. A challenge to intervene in mental health

W. Cueva (Ecuador)

From the institutional to the communal and social. A proposal of eco-systematic approach for adequate Mental Health Policies

E. Saad (Ecuador)**W11 Do we, Psychiatrists, Suffer from Dual Pathology?**Chairman ▶ **A. Pons** (Spain)Speakers **G. Massana-Montejo** (Spain)**J. Blanch-Andreu** (Spain)**W12 Management of the Adolescent Patient with TDAH**
(Organized by Laboratories Lilly)Chairman ▶ **J.A. Ramos-Quiroga** (Spain)**W13 Noradrenergic Modulation in Dual Pathology**
(Organized by Laboratories Juste)Chairman ▶ **M. Gutiérrez** (Spain)

Noradrenergic antidepressive in addiction treatment

G. Rubio (Spain)

Práctica clínica con inhibidores selectivos de la recaptación de noradrenalina en patología dual

F.J. Camarasa (Spain)**MEETING WITH THE EXPERT****E01 Use and Management of Excarbacepine in the patient with Dual Pathology**Expert ▶ **L. Peris** (Spain)**E02 Approach of Patients Involved in a Process of Benzodiazepines Desintoxication**

(Organized by Laboratories Pfizer)

Expert ▶ **J. Bobes** (Spain) and **G. Rubio** (Spain)**E03 Topiramato, Anticomitais and Dual Pathology**
(Organized by Brainpharma)Expert ▶ **A. Terán** (Spain)**E04 Borderline Personality Disorders, Addictions and DBT (DBT de Marsha Linehan)**Expert ▶ **A. Muñoz** (Chile)**E05 Meeting with the NIDA Director (National Institute on Drug Abuse)**Expert ▶ **N. Volkow** (EE.UU)**PRESENTATIONS****P01 Introduction of Perspective Epidemiological Study on the Prevalence of Dual Pathology in Madrid**

AEPD

Instituto de Adicción de Madrid Salud

Agencia Antidroga de la Comunidad de Madrid

Oficina Regional de Salud Mental de Madrid

P02 Presentation of the Sociedad Iberoamericana de Conductas Adictivas y Patología Dual (SICAP)Presenters ▶ **J. Didia-Attas** (Argentina) and**G. Haro** (Spain)Speakers ▶ **E. Velásquez** (Colombia) and**J. Martínez-Raga** (Spain)**P03 Presentation of the Book "Psychiatric Aspects of Cannabis Consumption"**

(Organized by the Agencia Antidroga de la Comunidad de Madrid)

Presenter ▶ **J.C. Negrete** (Spain)Chairman ▶ **L.A. Nuñez** (Spain)Editors ▶ **F. Arias** (Spain)**J.A. Ramos** (Spain)**P04 Presentation of the Book "Consenso de Cannabis". Sociedad Española de Psiquiatría (SEP)**Chairmen ▶ **M. Casas, C. Roncero y****E. Bruguera** (Spain)**P05 Presentation of the Book "Payasos Tristes: Un Enfoque Diferente de la Adolescencia y las Nuevas Adicciones"**Presenters ▶ **G. Fernández** (Argentina) y**H. Tevez** (Argentina)**P06 Presentation of the Book "ADHD in adolescents?"**Presenter ▶ **A. Arayats** (Spain)Speaker ▶ **N. Szerman** (Spain)

- C01 Comorbilidad de trastornos de personalidad y otros trastornos psiquiátricos y adicciones**
José María Vazquez Roel y Marta Cittadini.
Clínica Capistrano.
- C02 Evaluación de la psicopatía en una muestra de reclusos drogodependientes con la Psychopathy Checklist revisada (PCL-R)**
E. Álvaro¹, M. Vegue² y A. Santiago³.
(1) *C.I.S. Victoria Kent, Madrid, España.*
(2) *C.P. Madrid IV, Navalcarnero, Madrid, España.*
(3) *Universidad Complutense, Madrid, España.*
- C03 Análisis diferencial de la bidependencia clínica**
Carlos Sirvent Ruiz¹ y María de la Villa Moral Jiménez².
(1) *Fundación Instituto Spiral (Oviedo, España).*
(2) *Universidad de Oviedo (España).*
- C04 Diagnóstico del trastorno de juego patológico en sujetos con patología dual (esquizofrenia)**
Montserrat Gómez García¹, Enrique Echeburua Odrioxola y Montserrat Freixa Blanxart
IDP. Sección Juego Patológico.
Universidad País Vasco. Facultad Psicología.
Universidad Barcelona. Facultad Psicología.
- C05 Diferencias de género en la comorbilidad psiquiátrica con la dependencia al alcohol**
Bartolomé Pérez Gálvez, Lorena García Fernández, M^a Pura De Vicente Manzanaro, M^a Angustias Oliveras Valenzuela y Desirée Amorós Torá.
Hospital Clínico Universitario De San Juan.
- C06 Evaluación de la psicopatía en una muestra de reclusos drogodependientes con el International Personality Disorder Examination (IPDE)**
Enrique Álvaro Brun¹, Milagros Vegue González² y Andrés Santiago Sáez³
(1) *C.I.S. Victoria Kent, Madrid, España.*
(2) *C.P. Madrid IV, Navalcarnero, Madrid, España.*
(3) *Universidad Complutense, Madrid, España.*
- C07 Características de inicio y evolución del juego patológico y esquizofrenia en sujetos con patología dual**
Montserrat Gómez García¹, Enrique Echeburua Odrioxola y Montserrat Freixa Blanxart
IDP. Sección Juego Patológico.
Universidad País Vasco. Facultad Psicología.
Universidad Barcelona. Facultad Psicología.
- C08 Validación del Psychiatric Diagnostic Screening Questionnaire (PDSQ) en alcohólicos**
Bartolomé Pérez Gálvez, Lorena García Fernández, M^a Pura de Vicente Manzanaro, M^a Angustias Oliveras Valenzuela y Desirée Amorós Torá.
Hospital Clínico Universitario De San Juan.
- C09 El tratamiento de la comorbilidad en una comunidad terapéutica: Patología dual en Proyecto Hombre**
Antonio Jesús Molina Fernández y Manuela Reyes Requena.
Comunidad Terapéutica.
- C10 Patología dual, suicidio y migración: Un estudio en adolescentes ecuatorianos**
Emma Saad De Janon¹ y Julia Saad De Janon².
(1) *Hospital Psiquiátrico "Lorenzo Ponce" de Guayaquil y Cabildo de Guayaquil. Ecuador.*
(2) *Universidad Católica de Santiago de Guayaquil y Escuela Superior Politécnica del Litoral, Guayaquil. Ecuador.*
- C11 Motivación para el cambio**
Angeles Baldellou Bitria.
Prision de Mujeres.
- C12 Efectos del consumo de marihuana en funciones cognitivas involucradas en el aprendizaje escolar: Memoria y atención/concentración**
Anneliese Dörr Alamos, M. Elena Gorostegui, M. Paz Dörr Bulnes, Alejandra Sekler, Ismael Mena y Sandra Viani.
Facultad de Medicina Oriente, Universidad de Chile.
- C13 Trastornos mentales asociados en bidependientes**
María de la Villa Moral Jiménez¹ y Carlos Sirvent Ruiz².
(1) *Universidad de Oviedo (España).*
(2) *Fundación Instituto Spiral (Oviedo, España).*
- C14 ¿El consumo de opiáceos para controlar los síntomas sicóticos?**
Federico Caro Rojas.
CERTA, Hospital Paul Brousse
- C15 Evaluación del trastorno por déficit de atención e hiperactividad (TDAH) en una muestra de reclusos drogodependientes con la Wender-Utah Rating Scale (WURS)**
Milagros Vegue González¹, Enrique Álvaro Brun² y Andrés Santiago Sáez³
(1) *C.P. Madrid IV, Navalcarnero, Madrid, España.*
(2) *C.I.S. Victoria Kent, Madrid, España.*
(3) *Universidad Complutense, Madrid, España.*
- C16 Comorbilidad psicopatológica en la adicción a la cocaína: Resultados con el SCL-90-R**
Iñaki Lorea Conde^{1,2}, Javier Fernández-Montalvo², Jose Javier López-Goñi^{1,2} y Natalia Landa González³
(1) *Fundación Proyecto Hombre, Navarra.*
(2) *Universidad Pública de Navarra.*
(3) *Servicio Navarro de Salud-Osasunbidea.*
- C17 Características psicosociales asociadas a mujeres con patología dual en tratamiento**
María José Campillo Cascales, Asunción Santos de Pascual, Félix Ángel Periago Peralta y Marcela Sánchez Cubero.
Proyecto Hombre Murcia.
- C18 Propuestas para la detección e intervención en adolescentes con alto riesgo de patología dual**
Rosa Díaz Hurtado, Javier Goti Elejalde, Antoni Gual Solé y Josefina Castro Fornieles.
Hospital Clínic Universitari. Barcelona, España.

C19 Trastornos de ansiedad y trastorno por déficit de atención con hiperactividad en la infancia en drogodependientes
Constanza Daigre Blanco¹, Carolina Marín García, Carlos Roncero Alonso, Sergi Valero Ventura, Ángel Egido Polo y Miquel Casas.
Hospital Universitario Vall d'Hebron, Barcelona.

C20 Enfoque multidimensional de la psoriasis
Carmen Navas¹ y Deliana Zapata².
(1) *Universidad de Carabobo, Valencia, Venezuela.*
(2) *Ambulatorio Manuare, Carlos Arvelo, Venezuela.*

C21 La demanda
María Teresa Guillermo Pardenilla.
CTD Moratalaz. Cruz Roja Española. CAM.

C22 Influencia del consumo de sustancias en el diagnóstico de trastorno bipolar
Jorge López Castromán, Enrique Baca García e Ignacio Basurte Villamor.
Fundación Jiménez Díaz, Madrid.

C23 La patología dual: El funcionamiento neuropsicológico y la expresión de la ira como variables de la evolución del tratamiento en un programa residencial de deshabitación de drogodependientes
Manuel Ángel Lloves Moratinos^{1,2}.
(1) *ACLAD "Alborada" (PGD Xunta de Galicia), Tomiño, España.*
(2) *Universidad Complutense, Madrid, España.*

C24 Patología dual y gestión sanitaria. Análisis DAFO
Ignacio González Jiménez.
Unidad de Conductas Adictivas. Villena, Alicante.

C25 Trastorno límite de la personalidad y adicción
María Cristina Saez de Arregui.
Consultorios CAPI.

C26 Estudio descriptivo de una muestra de pacientes ingresados en una unidad de hospitalización breve
María Dolores Ortega García¹, Cristina Martínez Martínez¹, Carolina Salazar Li¹, Luis León Allué², Martín Vargas³ y Natalia Jimeno Bulnes⁴.
(1) *Hospital Clínico Universitario de Valladolid.*
(2) *Hospital Psiquiátrico "Dr. Villacián".*
(3) *Facultad de Medicina. Departamento de Psiquiatría.*
(4) *Complejo Hospitalario de Zamora.*

C27 Agresividad y conducta violenta
Cristina Martínez Martínez¹, M^a Dolores Ortega García¹, Carolina Salazar Li¹ y Luis León Allué².
(1) *Hospital Clínico Universitario de Valladolid.*
(2) *Hospital Psiquiátrico "Dr. Villacián".*

C28 Patología dual "Una experiencia de comunidad terapéutica en Argentina"
D. De Angelis y S. Rodríguez.
Proyecto U.N.O. "Una Nueva Oportunidad", Buenos Aires, Argentina.

C29 Patología dual en pacientes adictos: Comparación de sujetos reclusos en una unidad libre de drogas vs. pacientes ingresados en una comunidad terapéutica

María José Casares López¹, Ana González Menéndez¹, Roberto Secades Villa¹, Mercedes Torres Lobo², José Ramón Fernández Hermida¹ y María del Mar Álvarez Arias².

(1) *Unidad de Investigación en Conductas Adictivas. Facultad de Psicología. Universidad de Oviedo.*

(2) *Comunidad Terapéutica APTAS-El Valle. Asturias. España.*

NOTES

- P01 Patología dual - CAID de Alcalá de Henares**
Alfonso Vázquez Moure, José Miguel Barahona Martínez, Carmen Costumero Martín, Isabel Ferreruela Cañero e Isabel Rodríguez Aparicio.
CAID de Alcalá de Henares, Madrid.
- P02 Hiperactividad infantil como indicador de adicciones: Un estudio retrospectivo**
Musa Mohamed Isidro.
Centro Español de Solidaridad Proyecto Hombre.
- P03 Comorbilidad alcohol-depresión, el huevo o la gallina**
Ana Espliego Felipe¹, Jaime Adán Manés², Aintzane Sánchez-Lequerica³ y M^aJosé García Barquero¹.
(1) *Hospital Universitario La Princesa, Madrid.*
(2) *Hospital Puerta de Hierro, Madrid.*
(3) *Fundación Jiménez Díaz, Madrid.*
- P04 Influencia sobre el consumo de cocaína en pacientes con diagnóstico dual de trastorno depresivo y dependencia a cocaína en tratamiento con venlafaxina. Resultados preliminares**
Francisco Javier Trujillo Carrillo, Tania Rodríguez Martos Repetto, Josué Monzón Díaz, Mariela Sanginés Izzo, Rafael Valenciano Pío y Ramón Gracia Marco.
Hospital Universitario de Canarias, Tenerife.
- P05 Características sociodemográficas, trastornos de personalidad y motivación en una unidad terapéutica intrapenitenciaria**
María José Casares López, Ana González Menéndez, Roberto Secades Villa y José Ramón Fernández Hermida.
Unidad de Investigación en Conductas Adictivas. Facultad de Psicología. Universidad de Oviedo.
- P06 Iniciamos un nuevo viaje?**
Angeles y Cristina Baldellou-Rodríguez.
Prisión de WAD- Ras, Barcelona.
- P07 Comorbilidad psiquiátrica en mujeres atendidas por dependencia a sustancias**
Carlos Ordoñez Huaman, Manuel Catacora Villasante, Fabián Otarola Gutiérrez y Jacqueline Valdivieso Haro.
Hospital Hermilio Valdizan. Lima, Perú.
- P08 Comunidad terapéutica y patología dual: Aceptando el reto del paciente dual. Nuestra experiencia. Descripción de un modelo terapéutico**
Josep Maria Fàbregas Pedrell, Guillem Vázquez Soler y Sergi Vilardell Falcón.
CITA (Centro de Investigación y Tratamiento de Adicciones).
- P09 Consumo de alcohol en pacientes con metadona. Resultados del AUDIT y relación con la patología dual y otros factores**
Juan Jesús Hernández González-Nicolás, Magdalena Correa Perry, Teresa Abad, Tyanka Radinova Kostadinova, Adelaida Parra Ojeda y Gustavo Molina Rodríguez.
CTD Moratalaz, Cruz Roja. Madrid. Agencia Antidroga.
- P10 Higher free copper serum levels in mayor depression**
Maria Gabriela Bevacqua, Rosanna Squitti, Maria-carla Ventriglia, Stefania Mariani y Mauro Fontana.
Psychiatric Unit, SPDC, Dept. Neuroscience, AFaR.
- P11 Prevalencia de patología dual en la dependencia de alcohol**
Vicente Fabregat Navarro¹, M^a Teresa Bel Villar¹, Carlos Conesa¹, Antoni Corominas Díaz¹, Marivi Ortega Martínez¹ y Merçe Saperas².
(1) *Fundación Hospital de Mollet, Barcelona.*
(2) *Centro de Atención y Seguimiento (CAS) de Drogodependencias de Mollet, Barcelona.*
- P12 Patología dual en una unidad de agudos**
José María Gines Miranda, Raúl Fernández Montero, David Córcoles Martínez, Itziar Leal Leturia, José Manuel Arcega Felipe y Antoni Bulbena Villarrasa.
Hospital del Mar, Barcelona.
- P13 Perspectiva de género en pacientes de una unidad de patología dual**
Samuel Pombo Chorto, Olga González Irizar, Sara Arranz García, Nuria Sánchez Martínez, Blas Torrente Gutiérrez e Inés Niubó De Castro.
Hospital Psiquiátrico Universitario Institut Pere Mata. Reus, Tarragona.
- P14 Síntomas afectivos negativos en pacientes duales**
Miguel Landabaso Vazquez¹, Ioseba Iraurgi Castillo², Agustín Larrazabal Antía³ y Juan Manuel Jimenez Lerma⁴.
(1) *Centro de Toxicomanías. Barakaldo.*
(2) *MAPS Rekalde, Bilbao.*
(3) *CSM Renteria, Gipuzkoa.*
(4) *CSM Mondragón, Gipuzkoa.*
- P15 Dual diagnosis unit: Preliminary results of a new model**
Gerard Mateu Codina, Laura Diaz Digón, Laura Morro Fernández, Clara López-Solá, Anna Merino Torres y Marta Torrens Mèlich.
Unidad de Patología Dual, Centro Forum-Hospital del Mar, Barcelona.



- P16 Evaluación de una entrevista de cribado para la detección de comorbilidad psiquiátrica en sujetos consumidores de sustancias de abuso**
Juan Ignacio Mestre Pintó.
Institut Municipal d'Investigació Mèdica (IMIM). Barcelona, España.
- P17 Socio-educational workshops in a dual diagnostic unit**
Esperanza González Ruano, Assun Pie Balaguer y Laura Morro Fernández.
Unidad de Patología Dual, Centro Forum-Hospital del Mar, Barcelona. España
- P18 Análisis relacional de variables psicopatológicas, sociodemográficas y de consumo en dependientes de la cocaína**
Francisco Zacarés Romaguera¹, Olaya García Rodríguez², Emilio Sánchez Hervás³, Roberto Secades Villa⁴, Elena Martín Yáñez⁵ y Francisco Santonja Gómez⁶.
(1) *Facultad de Psicología. Universitat de València, España.*
(2) *Facultad de Psicología. Universitat de Barcelona, España.*
(3) *Unidad de Conductas Adictivas de Catarroja. Departamento 10. Consellería de Sanitat. Valencia, España.*
(4) *Facultad de Psicología. Universidad de Oviedo, España.*
(5) *Unidad de Conductas Adictivas Nou Campanar. Departamento 6. Consellería de Sanitat. Valencia, España.*
(6) *Centro Universitario Estema. Universidad Miguel Hernández. Alicante, España.*
- P19 Descripción de la psicoeducación grupal que realiza enfermería en la unidad de agudos de patología dual**
Regina Carreras Salvador, Anna González Fresnedo, Diana Tolosa Merlos, Rosa Aceña Domínguez y Daniel Segura Blanco.
Centro Forum, Hospital del Mar. Barcelona, España.
- P20 Trastorno por déficit de atención con hiperactividad en adultos en tratamiento por trastornos por uso de sustancias**
Constanza Daigre Blanco, Josep Ramos-Quiroga, Carlos Roncero Alonso, Sergi Valero Ventura, Rosa Bosch Munsó y Begoña Gonzalvo Cirac.
Hospital Universitario Vall d'Hebron. Barcelona, España.
- P21 VIH/SIDA, psicopatología y toxicomanías: "El Diagnóstico Triple en el Instituto Nacional de Cancerología"**
Claudia Tejeda Romero¹, Patricia Volkow Fernández² y Gady Zabicky Sirot³.
(1) *Hospital Psiquiátrico Fray Bernardino Alvarez. Tlalpán, Mexico.*
(2) *Instituto Nacional Mexicano de Cancerología.*
(3) *Instituto Nacional de Psiquiatría Doctor Ramón de la Fuente Muñiz. Mexico.*
- P22 Abstinencia y creencias sobre el abuso en consumidores de sustancias psicoactivas con diagnóstico dual**
María Fernanda Restrepo Atuesta^{1,2}, Irene Polo^{1,3}, Virginia Medina¹, Asbeldy Paez¹, Carlos Cerra¹ y Marlon Parra¹.
(1) *Universidad Simón Bolívar. Barranquilla, Colombia.*
(2) *Universität Bern. Berna, Suiza.*
(3) *Hospital Mental de Barranquilla CARI. Barranquilla, Colombia.*
- P23 Trastornos de la conducta alimentaria y abuso de sustancias**
Ana García Herrero¹, Catherine Séiquer de la Peña², Miguel Sánchez Garre¹ y Lidia Sánchez Pastor¹.
(1) *Hospital General Universitario Reina Sofía.*
(2) *Centro de Atención a Drogodependencias.*
- P24 ¿Dónde se diagnostica y trata la patología dual? El "Estudio Marbella" (2000-2008)**
Vicente García Vicent¹, Ana Belén Soler Martín², José de la Chica Casado¹ y Vanesa Romero Mateos¹.
(1) *Comunidad Terapéutica Hacienda de Toros.*
(2) *Centro Ambulatorio de Adicciones de Marbella.*
- P25 Patología dual: Un término demasiado amplio y confuso. El concepto más operativo de patología dual grave (PDG). El "Estudio Marbella" (2000-2008)**
Vicente García Vicent¹, Ana Belén Soler Martín², José de la Chica Casado¹ y Vanesa Romero Mateos¹.
(1) *Comunidad Terapéutica Hacienda de Toros.*
(2) *Centro Ambulatorio de Adicciones de Marbella, Málaga, España*
- P26 Comparación de las causas de mortalidad de pacientes duales frente a las de adictos no duales. El "Estudio Marbella" (2000-8)**
Vicente García Vicent¹, Ana Belén Soler Martín², José de la Chica Casado¹ y Vanesa Romero Mateos¹.
(1) *Comunidad Terapéutica Hacienda de Toros.*
(2) *Centro Ambulatorio de Adicciones de Marbella. Málaga, España.*
- P27 Prevalencia y análisis de la patología dual grave (PDG) en un programa municipal de adicciones. El "Estudio Marbella" (2000-8)**
Vicente García Vicent¹, Ana Belén Soler Martín², José de la Chica Casado¹ y Vanesa Romero Mateos¹.
(1) *Comunidad Terapéutica Hacienda de Toros.*
(2) *Centro Ambulatorio de Adicciones de Marbella. Málaga, España.*
- P28 Psicopatología y consumo de drogas en pacientes con obesidad mórbida**
Sergio Sánchez Romero¹, Francisco Arias Horcajadas¹, Carmen Asensio Peña¹, M^a Estrella García-Ochoa Marín², Laura Hidalgo Martín³ y Roberto J. Ramirez Romero⁴.
(1) *Hospital Universitario Fundación Alcorcón. Madrid, España.*
(2) *Hospital Nacional de Parapléjicos. Toledo, España.*
(3) *Hospital Rodríguez Lafora. Madrid, España.*
(4) *ATENPACE. Madrid, España.*

- P29 Consumo de sustancias en pacientes con trastorno de la conducta alimentaria**
Sergio Sánchez Romero¹, Francisco Arias Horcajadas¹, Carmen Asensio Peña¹, M^a Estrella García-Ochoa Marín², Laura Hidalgo Martín³ y Roberto J. Ramirez Romero⁴.
(1) *Hospital Universitario Fundación Alcorcón. Madrid, España.*
(2) *Hospital Nacional de Parapléjicos. Toledo, España.*
(3) *Hospital Rodríguez Lafora. Madrid, España.*
(4) *ATENPACE. Madrid, España.*
- P30 Gravedad de la adicción en pacientes cocainómanos: Análisis diferencial entre juicios de entrevistadores y puntuaciones compuestas del EUROPASI**
R. Secades Villa¹, O. García Rodríguez², E. Sánchez Hervás³, F. Zacarés Romaguera⁴, J. Fernández Hermida⁵ y G. García Fernández¹.
(1) *Facultad de Psicología. Universidad de Oviedo, España.*
(2) *Facultad de Psicología. Universidad de Barcelona, España.*
(3) *Unidad de Conductas Adictivas Catarroja. Dpto.10. Consellería de Sanitat. Valencia, España.*
(4) *Facultad de Psicología. Universidad de Valencia, España.*
(5) *Facultad de Psicología. Universidad de Oviedo, España.*
- P31 Psicopatología como predictor de la evolución clínica tras intervención de cirugía bariátrica**
Sergio Sánchez Romero¹, Francisco Arias Horcajadas¹, Silvia Sánchez Zaldívar¹, Carmen Asensio Peña¹, M^a Estrella García-Ochoa Marín² y Laura Hidalgo Martín³.
(1) *Hospital Universitario Fundación Alcorcón. Madrid, España.*
(2) *Hospital Nacional de Parapléjicos. Toledo, España.*
(3) *Hospital Rodríguez Lafora. Madrid, España.*
- P32 Cuestionario para la evaluación de la hipótesis de la automedicación**
R. Martínez Riera, D. Martínez Sanvisens, M. Espadas Tejerina, P. Cano Martín, M.J. González de Paz, I. Méndez Blanco y J. Vallés Lapica.
Hospital Sagrat Cor de Martorell. Barcelona, España.
- P33 Aripiprazol: Polivalencia y seguridad en patología dual**
Jaume Roig Llavera¹, Inés Andres Tillmann², Carmen Romero¹, Enric Batlle³, Montserrat Mola³ y Teresa Fernández³.
(1) *CAS Delta.*
(2) *CAS Granollers. Barcelona, España.*
(3) *CAS Mataró. Barcelona, España.*
- P34 Hospital psychiatric morbidity associated with alcohol use (ICD-9, Cod.291, 303). Longitudinal study (Spain, 1980-2004)**
Alvaro Medel-Herrero¹ y Antonio Sarria-Santamera^{1,2}.
(1) *Agencia de Evaluación de Tecnologías Sanitarias. ISCIII. Madrid, España.*
(2) *Departamento de Ciencias Sanitarias y Médico-sociales. Universidad de Alcalá. Madrid, España.*
- P35 Abuso de anticolinérgicos en pacientes no psicóticos. Revisión del estado actual a propósito de un caso de abuso intravenoso de biperideno**
Alfredo Gurrea Escajedo¹ y Lorena Castillo Giménez².
(1) *Hospital San Jorge. Huesca, España.*
(2) *Unidad de media estancia de rehabilitación psicosocial Santo Cristo de los Milagros. Huesca.*
- P36 Psychiatric comorbidity and main hospital morbidity indicators associated with drug use (ICD-9, Cod. 292, 304, 305). Spain, 1980-2004**
Alvaro Medel-Herrero¹ y Antonio Sarria-Santamera^{1,2}.
(1) *Agencia de Evaluación de Tecnologías Sanitarias. ISCIII. Madrid, España.*
(2) *Departamento de Ciencias Sanitarias y Médico-sociales. Universidad de Alcalá. Madrid, España.*
- P37 Toxic abuse and therapeutic non-fulfilment of psychotic disorders**
Carolina Salazar Li¹, M^a Dolores Ortega García¹, Cristina Martínez Martínez¹, Luis León Allué², Rocío Gómez Martínez¹ y Gloria Rodríguez Carretero¹.
(1) *Hospital Clínico Universitario de Valladolid.*
(2) *Hospital Psiquiátrico Dr. Villacián. Valladolid.*
- P38 Drogadicción: Estudio de una década**
M^a Dolores Ortega García¹, Cristina Martínez Martínez¹, Carolina Salazar Li¹, Luis León Allué² y M^a Jesús García Cantalapiedra¹.
(1) *Hospital Clínico Universitario de Valladolid.*
(2) *Hospital Psiquiátrico Dr. Villacián. Valladolid.*
- P39 Topiramato en trastornos que cursan con agresividad**
Cristina Martínez Martínez¹, M^a Dolores Ortega Gracia¹, Carolina Salazar Li¹ y Luis León Allué².
(1) *Hospital Clínico Universitario de Valladolid.*
(2) *Hospital Psiquiátrico Dr. Villacián. Valladolid.*
- P40 Etiopatogenia de una gestación delirante. A propósito de un caso**
Patricia Marqués Cabezas¹, Enrique Perez Ruiz¹ y Fernando Uribe de Cegama².
(1) *Hospital Clínico Universitario.*
(2) *Hospital Universitario del Río Hortega.*
- P41 Adicción a la cocaína y comorbilidad psiquiátrica: Análisis de supervivencia en una muestra de pacientes en tratamiento**
E. Sánchez Hervás¹, R. Secades Villa², F. Zacarés Romaguera³, O. García Rodríguez⁴, E. Martín Yáñez⁵, F. Santonja Gomez⁶, J. Fabra Benet y O. Ribera Martínez.
(1) *Unidad de Conductas Adictivas Catarroja. Dpto.10. Consellería de Sanitat. Valencia, España.*
(2) *Facultad de Psicología. Universidad de Oviedo, España.*
(3) *Facultad de Psicología. Universidad de Valencia, España.*
(4) *Facultad de Psicología. Universitat de Barcelona, España.*
(5) *Unidad de Conductas Adictivas Nou Campanar. Dpto.6. Consellería de Sanitat. Valencia, España.*
(6) *Centro Universitario Estema. Universidad Miguel Hernández. Alicante, España.*

- P42 Comorbilidad psiquiátrica en una muestra de drogo-dependientes en tratamiento en Castilla y León**
F.J. Álvarez¹, M.T. Gómez-Talegón¹, I. Fierro¹ y A. Marcos².
(1) *Instituto de Estudios de Alcohol y Drogas, Facultad de Medicina, Universidad de Valladolid, España.*
(2) *Centro de Atención a Drogodependientes de Cruz Roja de Valladolid. España.*
- P43 Trastorno de personalidad y trastorno por uso de sustancias**
C. López¹, A. Real¹, J. Salavert², C. Roncero^{1,3}, M. Alfonso² y M. Casas^{1,3}.
(1) *Hospital Universitario Vall d'Hebron. Barcelona.*
(2) *Hospital Les Germanes Hospitalaries de Sant Rafael. Barcelona, España.*
(3) *Universitat Autònoma de Barcelona, España.*
- P44 Creativity, psychopathology and drugs: Van Gogh and the absinthe**
A. De Cós Milas.
Hospital de Móstoles, Madrid, España.
- P45 Presencia de síntomas psicóticos y años de consumo en pacientes en tratamiento por dependencia a cocaína**
Carlos Roncero, Elisabetta Muscas, Constanza Drigre, Begoña Gonzalvo, Amanda Rodríguez y Rebeca Resmella.
Servicio de Psiquiatría. Hospital Universitario Vall d'Hebron. Barcelona, España.
- P46 Tuberculosis en población indigente de Medellín: Análisis de los patrones de transmisión de *Mycobacterium tuberculosis* y su asociación con trastornos mentales y factores psicosociales**
Marta Elena Correa Arango.
Universidad Pontificia Bolivariana. Medellín, Colombia.
- P47 Cerebros intoxicados.... payasos tristes**
Guillermo Fernández d'Adam¹ y Hilda Tevez².
(1) *Universidad Del Salvador-Instituto de Drogr-dependencia.*
(2) *Asociacion de Psiquiatras Argentinos - CAP ETICA.*
- P48 El consumo de psicofármacos un problema comunitario**
Bertha Zangroniz Calvo¹ y María A. Torres¹.
(1) *Quimefa.*
(2) *Universidad de la Habana, Cuba.*
- P49 Serotonin transporter in lymphocytes of major depression patients treated with venlafaxine and psychotherapy**
Margarita Morles Palencia¹, Andrés Rojas², Lucimey Lima³, Luis Arocha⁴ y Slavador Mata⁴.
(1) *Hospital Universitario Jesús María Casal Ramos.*
(2) *Hospital Vargas de Caracas, Venezuela.*
(3) *Instituto Venezolano Investigaciones Científicas.*
(4) *Hospital Vargas . Caracas, Venezuela.*
- P50 Biomarcadores de la ansiedad**
José Caparrós Cantó.
Privado.
- P51 Estudio sobre actitudes ante el consumo de drogas en población juvenil de alto riesgo**
Rafael Villanueva Blandón.
Centro Comarcal de Tratamiento Ambulatorio a las Adicciones (CTA) Mairena del Alcor. Sevilla, España.
- P52 Prevalencia, perfil del usuario y abordaje de la patología dual en el centro de tratamiento ambulatorio a las adicciones de Mairena del Alcor (Sevilla)**
Rafael Villanueva Blandón.
Centro Comarcal de Tratamiento Ambulatorio a las Adicciones (CTA) Mairena del Alcor. Sevilla, España.
- P53 Abordaje de la patología dual en la Red Pública de Atención a las Drogodependencias de Andalucía. Experiencia desde el CTA Mairena del Alcor (Sevilla)**
Rafael Villanueva Blandón.
Centro Comarcal de Tratamiento Ambulatorio a las Adicciones (CTA) Mairena del Alcor. Sevilla, España.
- P54 Programa de prevención comunitaria del consumo de drogas. Experiencia desde el CTA Mairena del Alcor (Sevilla)**
Rafael Villanueva Blandón.
Centro Comarcal de Tratamiento Ambulatorio a las Adicciones (CTA) Mairena del Alcor. Sevilla, España.
- P55 La patología dual en la violencia de género: Estudio en el Partido Judicial de La Laguna (Santa Cruz de Tenerife)**
Raquel Martín Olivera, Natalia Mederos Real, Francisco Javier González Delgado y María Luisa Suárez Solá.
Instituto de Medicina Legal de Santa Cruz de Tenerife. Canarias, España.
- P56 Reinserción social de pacientes duales: Caminos posibles**
Sebastián Rodríguez y Daniel De Angelis.
Proyecto U.N.O. Una Nueva Oportunidad.. Buenos Aires, Argentina.
- P57 Patología dual y rehabilitación psicosocial**
Dácil Hernández García, Jorge Sánchez Bravo, Eva Rodríguez Chávez, Begoña Castellano Pérez, Isidoro Fernández Márquez y Juan de la Fuente Portero.
Hospital Nuestra Señora de la Candelaria. Santa Cruz de Tenerife. Tenerife, España.
- P58 Medisofia: Descubrir el poder de la palabra. Tratamiento psicosocial**
Gemma Isabel García Crespo.
GEPSICOM: Consultoría, Formación y Salud. Alcalá de Henares. Madrid, España.

P59 Descripción de la evolución de los pacientes ingresados en la unidad de patología dual del Instituto de Adicciones de Madrid Salud

Ignacio García Barquero¹, Susana Heras Dolader², Beatriz Mesías Pérez³, Rocío Molina⁴, Paloma Varas Soler⁵, Ana Varela⁶ y Pablo Vega Astudillo⁷.

(1) *Médico CAD San Blas I. Adicciones.*

(2) *Médico CAD Tetuan I. Adicciones.*

(3) *Médico Departamento Asistencia I. Adicciones.*

(4) *Médico CAD Arganzuela.*

(5) *Médico Departamento Asistencia I. Adicciones.*

(6) *Psicólogo CAD Vallecas I. Adicciones.*

(7) *Médico CAD Latina I. Adicciones.*

P60 Pathological gambling as a non-substance addiction

L. Nábelek¹, J. Vongrej¹ y E. Nábelková².

(1) *F.D. Roosevelt Hospital. Banská Bystrica, Slovakia.*

(2) *M. Bel University. Banská Bystrica, Slovakia.*

P61 Enfermedad mental: Un estado de conciencia sobre una inexplicable regresión del ser

Juan Miguel Vargas Ponciano.

Centro de Investigación, Difusión y Promoción de la Libertad Interior (CIPLI). Trujillo, Perú.

P62 Insomnio y patología dual

I. Gobernado, Y. Rosa, C. Erausquin, R. Arroyo, M. Lázaro, A. Regidor y E. Ochoa.

Hospital Universitario Ramón y Cajal, Madrid, España.

P63 Prevalencia de patología dual en pacientes ingresados para desintoxicación en UDH

Y. Rosa, C. Erausquin, M. Lázaro, R. Arroyo, I. Gobernado, R. Gómez y E. Ochoa.

Hospital Universitario Ramón y Cajal, Madrid, España.

P64 Bipolares duales: Errores en el diagnóstico

J. López Castromán, M.M. Pérez Rodríguez, R. Navarro Jiménez, M. Negueruela López, D. Zambrano Enríquez-Gandolfo E. Baca García.

Fundación Jiménez Díaz, Madrid, España.

NOTES

L. Agüera	S13	F. Ferré-Navarrete	S19	L. Peris	S07, E01
E. Aguilar	W10	D. Fraguas	S19	C. Pinet	S01
J. Aizpiri	S32	M.D. Franco	S12, S18, S26	G. Ponce	S09
M. Ajoy	W10	J. García-Albea	S16	A. Pons	W11
C. Álamo	S31	M. García-Nieto	S05	C. Puerta	S28
A.M. Almaraz	S08	M.P. García-Portilla	S18	J. Quintero	S25
F.J. Álvarez	S20	V. García-Vicent	S01	J. Ramírez	S33
C. Álvarez-Vara	S22, CF07	D. Gigena-Parker	W07	J.A. Ramos-Atance	S04, P03
E. Ambrosio	S04, S28	G. Gilchrist	S21	J.A. Ramos-Quiroga	S25, W12
I. Ancín	S16	J.M. Goikolea	S11	R. Rebolledo	W06
M. Aragües	S13	A. González-Catena	W09	C. Rigalt	Pag.12
A. Arayats	P06	J.L. González de Rivera	CF05	I. Ríos	W05
F. Arias	S04, S05, P03	F. González-Sáiz	S30	A. Rivera	W06
F.J. Ayesta	S01	M.A. González-Torres	S07	M. Roca	S29
F. Babín	S14, S19	B. Gonzalvo	S20	F. Rodríguez-Fonseca	S03
E. Baca-García	S02	M.I. Guijarro	W03	R. Rodríguez-Jiménez	S13
A. Barabash	S16	M. Gurpegui	S01	M. Rodríguez-Pérez	W02
I. Basurte	W07	M. Gutierrez	W13	C. Rodríguez-Seguí	W09
L. Beato	S23	S. Guyon	S14	P.M. Roig	S32
E. Belfort	CF02	G. Haro	S31, P02	L. Rojo	S23
A. Benabarre	S11	J.J. Hernandez	W04	C. Roncero	S12, S17, S20, S25, S30, P04
M. Bernardo	S06	J. Hoenicka	S09	S. Ros	S26
J. Blanch	W11	M. Iribarren	S09	P. Rossi	W02
J. Bobes-García	SP02, S06, E02	M.M. Isidro	W02	G. Rubio	S13, W13, E03
E. Bruguera	S33, P04	D. Jiménez	S16	P. Ruiz	SP02, CF02
L. Caballero	S22, S24, S29, S33	M. Jiménez	S18	E. Saad	W10
J.A. Cabranes	S16	M.A. Jiménez-Arriero	S09	M. Saénz-Herrero	S16
A. Cáceres	S14	E. Kalina	CF06, S32	P. Saiz	S18
C. Cachay	W01	N. Koldobsky	CF04	V.M. Salcedo	W01
A. Calcedo	S15	G. Lahera	S11	J. Sanjuan	S06, S22
F.J. Camarasa	W13	C. López	S24	L. San Molina	S08
J.J. Carballo	S02	S. López-Chamón	W08	J. San Sebastián	S19
M.J. Casares	W03	A. López-Duran	S28	M.M. Sánchez	S17
M. Casas	CF01, S12, S25, S30, S31, P04	M.I. López-Ibor	SP02, CF03	C. Sánchez-Bello	S27
R. Casquero	W08	P. Lusilla	S17	G. Santillán	W07
I. Colado	S04	A. Lligoña	S20	J. Sanz	S15
F. Collazos	S24	A. Madoz	S05	M. Sanz-Peinado	S16
J. Colom	CF01	G. Martín	W04	M. Sellés	SP03
P. Courtet	S02	R. Martín-Santos	S21	L. Sher	S02
W. Cueva	W10	I. Martínez-Gras	S09	C.M. Silva Valdebenito	W02
R. Chandia	S27, S32	J.M. Martínez-Raga	S08, P02	J. Solé	S10, W05
A. Charro	S16	M. Mas	S11	M.J. Sotelo	W05
J.P. Daulouede	S08, S30	G. Massana	W11	C. Soutullo	S25
B. De la Fuente	S17	P. McKenna	CF03, S10	N. Szman	SP01, S07, P06
I. De la Serna	S26	J. Melendo	CF04	A. Teran	E03
J. De León	S02	Y. Meres Montero	W01	H. Tevez	P05
J. Del Corral	W06	J.A. Micó	S29, S33	J.M. Torrecilla	SP01
M. Del Nogal	W04	R. Molina	W04	M. Torrens	S20, S21
C. Del Pino	W04	J.M. Montes	S11, CF06	B. Torres-Pardo	S16
R. Del Pozo	Pag.12	A. Moriñigo	S26	V. Tort	S15
L. Diaz	S18	C. Moya	CF07	D. Urgelés	W06
M. Diaz-Marsá	S23	A. Muñoz	E04	J. Valls	S10
J. Didia-Attas	S07, S08, S27, P02	L. Muñoz-Lorenzo	W06	O. Valverde	S21
A. Domingo	S20	R. Navarro-Cueva	S27	F. Vaz	S23
J. Ellena	SP03	M. Navío	S13	B. Vázquez	S16
J. Espinera	S14	J.C. Negrete	CF05, P03	P. Vega	W03
M. Farré	S12	L.A. Nuñez	S03, S05, P03	M. Velao	S16
J.L. Fernández	W07	E. Ochoa	S05	E. Velasquez	S27, P02
G. Fernandez-d'Adam	P05	S. Pacurucu	S27	A. Verdejo	S28
E. Fernández-Espejo	S03	M. Padrino	W03	M.P. Viveros	S03
J. Fernández-Ruiz	S04	E.J. Pedrero	S28	N. Volkow	SP01, E05
J.M. Fernández-Rua	SP03	J. Pérez de los Cobos	S28		
		D. Pérez-Madera	S14		

TYPES OF SESSION

PLENARY LECTURES AND CONFERENCES

There will be **three Plenary Lectures** and **seven Conferences** of 60 minutes each, delivered by prominent figures proposed by the Congress Organizing Committee.

SIMPÓSIA

These 90 min. sessions will be selected by the Scientific Committee from those proposed by any interested psychiatrist. Each symposium will include no more than five presentations.

MASTER CLINICAL CASE CONFERENCE

In these sessions (90 min each), a clinical case will be presented by a Young Psychiatrist Fellow and discussed by an eminent senior clinician. The fellow and the discussant will be invited by the Scientific Committee.

WORKSHOPS

Workshops will be sessions focusing on translating research findings and clinical wisdom into routine practice. Each of them is scheduled to last 90 min. They will be selected by the Scientific Committee from those proposed by any interested psychiatrist.

PRESENTATIONS

Session reserved for presenting scientific novelties such as books, associations, surveys... in 60 minutes session.

ORAL COMMUNICATIONS

Oral Communications will be presented in 90 min sessions. The time allotted to each presenter will be 7 min, followed by 3 min of discussion. The papers will be selected by the Scientific Committee from those submitted by any interested psychiatrist.

POSTERS

Posters will be presented in Poster Sessions, grouped by subject. They will be selected by the Scientific Committee from those submitted by any interested psychiatrist. Each poster should be **0.90 m wide x 1.20 m high**. The text and illustrations should be **readable from a distance of 2 meters**.

CME CREDITS

Credited by:

- ▶ **The European Accreditation Committee in CNS** has designated this Congress for a maximum of **24.5 CME credits**. Those interested in obtaining these CME credits will be required to fill in the enclosed special feedback rating form.
- ▶ **Comisión de Formación Continuada de las Profesiones Sanitarias de la Comunidad de Madrid-Sistema Nacional de Salud** con **1,4 créditos** de Formación Continuada.
- ▶ **WPA** is pleased to certify that the Congress Attendees are eligible for **up to 21 hours of CME WPA credits**.
- ▶ **Reconocimiento de Interés Sanitario**

AWARDS

Friday, May 30th ▶ 12:30 hours ▶ Auditorio

Commemorative plates will be given to the following **honorary members of the AEPD** during a special session:

- ▶ **Nora Volkow**
- ▶ **J.J. López-Ibor**
- ▶ **Julio Bobes**
- ▶ **Pedro Ruiz**
- ▶ **Miguel Casas**
- ▶ **Francisco Babín**

PRIZES

There are **three prizes for the Best Three Posters**:

- ▶ **A first prize worth 1.500 €**
- ▶ **Two accessit worth each 750 €**

The prizes will be given on Friday, May 30th during the Awards session.

In addition to mentioned amount, each awarded researcher will receive the following sculpture:



Title: "La Llama" (The Flame)
Dimensions: 28x10x10 cm
Materials: Tile wood
Date of termination: December 2007
Sculptor: **Teófilo Buendía Girón**
Number of pieces: 40

Sponsored by
Instituto de Adicciones

During the celebration of the Congress an **exhibition will be held of art pieces designed at the Arttherapy Workshop of the Association "La Koma Joven"**.



Podrán cortar todas las flores, pero nunca terminarán con la primavera



El arte nunca deja indiferente

SOCIAL EVENTS

Friday, May 30th 2008

20:00 hours

Reception and Welcome Cocktail
El Buen Retiro Gardens (Cecilio Rodríguez Gardens)
 Hosted by Instituto de Adicciones de Madrid Salud

Important: The capacity is limited to **400 people** for security reasons. To attend it is obligatory to **collect the invitations at the Congress Secretariat**. Invitations will be given on a first come first serve order until tickets have run out.



History: The Gardens of El Buen Retiro originated from 1630 to 1640 when the Count Duke of Olivares made a present to the king of a property that had been given to him by the Duke of Fernan Nuñez for the recreation and refreshment of the Royal Court near the Monastery of Los Jeronimos, in Madrid. In this way together with the reform of the Royal Pavillon standing near the Monastery, the build up of the Buen Retiro Palace begun. At that moment it had 145 hectares.

Many changes have since taken place, frequently with no previous planning, which have changed the look of this garden, such as the Royal parterre, the Royal China Factory or the Astronomical Observatory.

After the 1868 revolution, the Glorious, the gardens became municipal property and its doors were open to all the citizens.

The last garden jobs were done by the major gardener Cecilio Rodríguez, who designed the Rose garden and the gardens bearing his name.

VENUE



Hotel Meliá Castilla*****

Capitán Haya, 43
 28028 Madrid

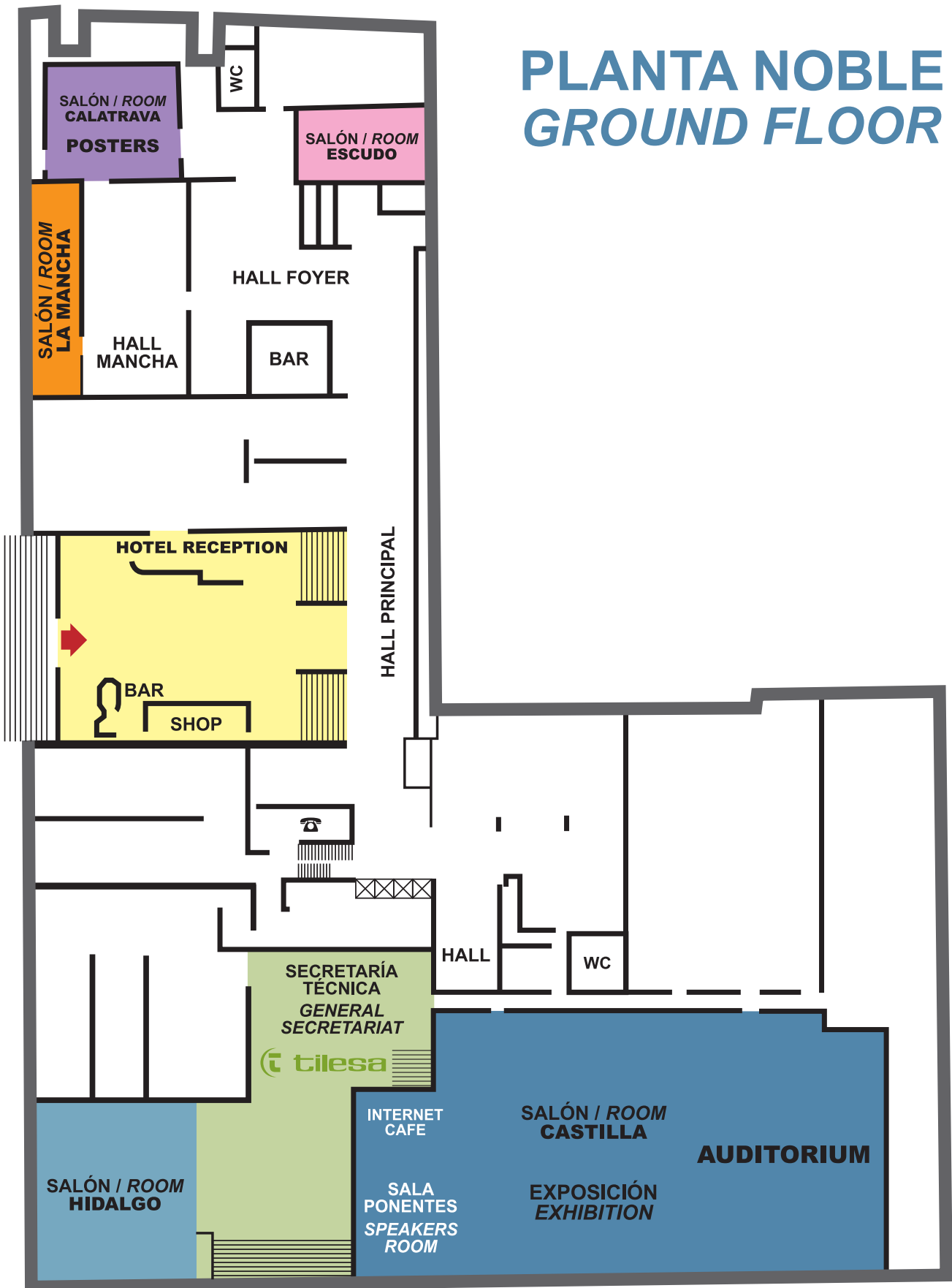
The Hotel Meliá Castilla hotel is situated in the known financial and commercial area of Madrid, near the famous boulevard "Paseo de la Castellana". The hotel is also located near Barajas Airport, the IFEMA Trade Exhibition Center, the Congress Hall and just some minutes away from the historical center of Madrid.

With its fifteen floors housing 916 rooms, in which all kinds of commodities and services are placed to make the stay of all guests memorable. A wide, airy hall, full of light with refreshing greenery welcomes its clients.

The Melia hotel is considered one of the most updated congress and convention centers in Europe, having 23 meeting rooms (a total of 4.000 sq.mts), an Auditorium sitting 511 pax, fitted with the latest technological devices, spaces for booths and sufficient counters to easily attend to a large number of delegates.



PLANTA NOBLE GROUND FLOOR



PRINCIPAL SPONSOR



Respuestas que importan.

SPECIAL SPONSOR



Schering-Plough



BASIC SPONSOR



Merck
en Psiquiatría



Trabajando juntos por un mundo más sano™



Wyeth

**TILESA OPC**

Londres, 17 • 28028 Madrid (Spain)
Tel. +34 913 612 600 • Fax +34 913 559 208
www.cipd2008.com • secretariat@cipd2008.com

SCIENTIFIC SOCIETIES



World Psychiatric Association



Asociación Psiquiátrica de América Latina



Sociedad Española de Psiquiatría



Sociedad Española de Psiquiatría Biológica



Sociedad de Psiquiatría de la Comunidad Valenciana



Sociedad Española de Toxicomanías

SOCIDROGALCOHOL
Sociedad Científica Española de Estudios sobre el Alcohol, el Alcoholismo y las otras Toxicomanías



IAEPD

Instituto Argentino para el Estudio de la Personalidad y sus Desórdenes

INSTITUTIONS



Plan Nacional sobre Drogas

SECRETARÍA GENERAL DE SANIDAD
DELEGACIÓN DEL GOBIERNO PARA EL PLAN NACIONAL SOBRE DROGAS



Oficina Regional de Coordinación de Salud Mental



Agencia Antidroga

67

Comunidad de Madrid

